



**BOON HIN ENGINEERING &
CONSTRUCTION SDN. BHD.**

**AIR POLLUTION CONTROL
SYSTEM
DUST COLLECTION SYSTEM**



EMISSION OF AIR POLLUTANTS

INTRODUCTION

The discharge of air pollutants or better known as impurities consisting of smoke, soot, ash (including fly ash), cinders, grit, solid particles of any kind inclusive of particulate, gases, fumes, mist odors and radioactive substances which are generated as a result of combustion of fuel and the like, or a result of the use of electricity as a heat source, or a result of synthesis, resolution or any other treatment and any other substances which may be designated by the Minister as those which are liable to affect adversely the human health or the living environment is strictly regulated by the ENVIRONMENT QUALITY (CLEAN AIR) REGULATIONS, 1978 which came into force on the 1st October 1978.

REGULATION

Prior written approval from the **Department of Environment (D.O.E.)** is required before commencing the installation of any such equipment or erection for the purpose of regulating the emission of such impurities or pollutants in an industry or factory. Unless licenses issued in respect of such premises vary, the Regulation shall apply to:-

- A. Any premises used for any industrial or trade purposes or on which matter is burnt in connection with any industrial or trade purposes including burning of waste, irrespective of whether such premises are prescribed under section 18 of the Act or not;
- B. Any facility or process that discharges or is capable of discharging air impurities into open air;
- C. Every chimney;
- D. Every industrial plant; and
- E. Every fuel burning equipment.

OUR COMPANY

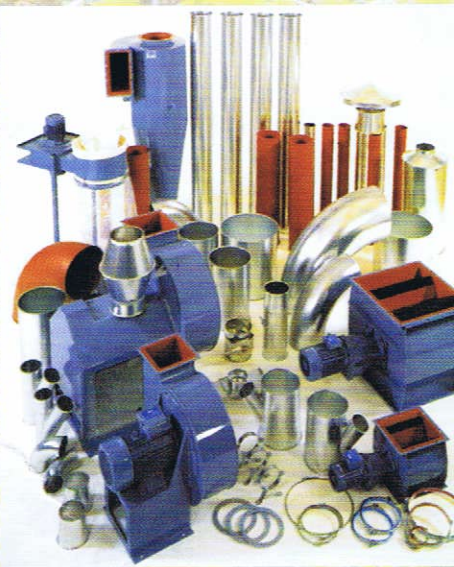
BOON HIN ENGINEERING & CONSTRUCTION SDN. BHD. was established at the beginning of 1997 as a firm to conduct businesses in consulting, designing, manufacturing and installing of Dust Collector Systems for institutions that require to conform to the standards and regulations of the **Department of Environment (D.O.E.)**. Today the company has the capability to undertake all civil engineering works related to the metal industry in general and the Dust Collector Systems in particular. Over the past years, the company had built up excellent working relationship with varied consultants, suppliers, institutions and statutory bodies to support the efficient and excellent services provided while still being competitive.

OUR ROLE & SERVICES

We at **BOON HIN ENGINEERING & CONSTRUCTIONS SDN. BHD.**, act as consultants to any institutions which require our service for the complete documentation & submission to the relevant authority (D.O.E.) for a written approval as per the Regulation of 1978. Further to above said we are also fully equipped to design or modify or build & commission the various systems of Air Pollutant Controls as per the requirements of the **Department of Environment (D.O.E.)**.

SUMMARY

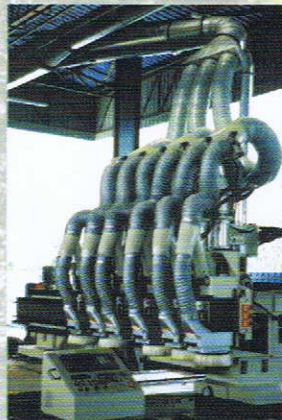
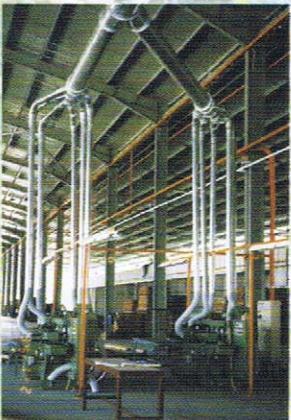
Though the Air Pollution Regulation has been in force all these years, strict enforcement has only commenced recently due to severe violations by the numerous industries that are occupying the Industrial Areas. Too often then not, ignorance of the law has been the cause of non-compliance of the standards established by **Department of Environment (D.O.E.)**. To this effect, our company is ever ready to provide you the necessary professional advice & work should you require our services. Please do not hesitate to call us for any doubts arising.



TYPES OF DUST COLLECTOR



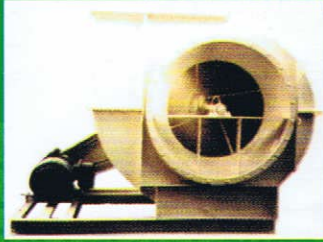
TYPES OF DUCTING SYSTEM



CONSTRUCTION SDN. BHD.

P
R
O
D
U
C
T
S

TYPES OF FANS



CENTRIFUGAL FAN
(FCV VENT SET)



CENTRIFUGAL FAN
(SWSI SERIES)



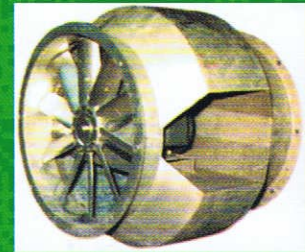
CENTRIFUGAL FAN
(EX SERIES)



SIROCCO FAN



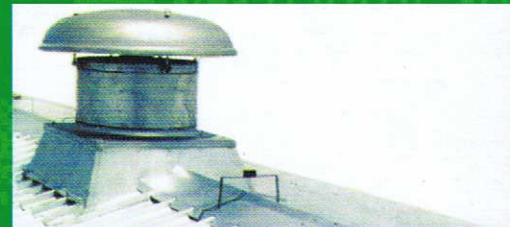
AXIAL FLOW FAN
(DIRECT DRIVE)



AXIAL FLOW FAN
(BIFURCATED TYPE)



AXIAL FLOW FAN
(BELT DRIVEN)



A ROOF VENTILATION FAN
(DIRECT DRIVE)

BOON HIN ENGINEERING & CONSTRUCTION SDN. BHD.
(Co. No. 4217367)
No. 88 & 90, Jalan Sungai Tukang 2,
Kawasan Perusahaan Sungai Tukang,
08000 Sungai Petani, Kedah Darul Aman,
Tel: 604-4213108 / 604-4251451
Fax: 604-4224164



**BOON HIN ENGINEERING &
CONSTRUCTION SDN. BHD.**